

**Installation instruction
metal panel box with
probe thermostat**

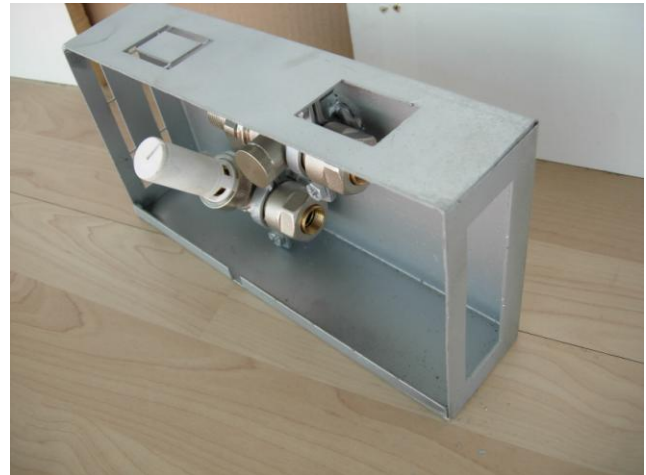
REV. 00 – 09/07/2012

HEKOS srl Via Meassa, 279 Loc. Sagrognà - 32100 Belluno (BL)

tel. +39 0437 999647 fax +39 0437 999849

Azienda certificata ISO 9001:2008 - Certificato n° IT12/0561

www.hekos.com



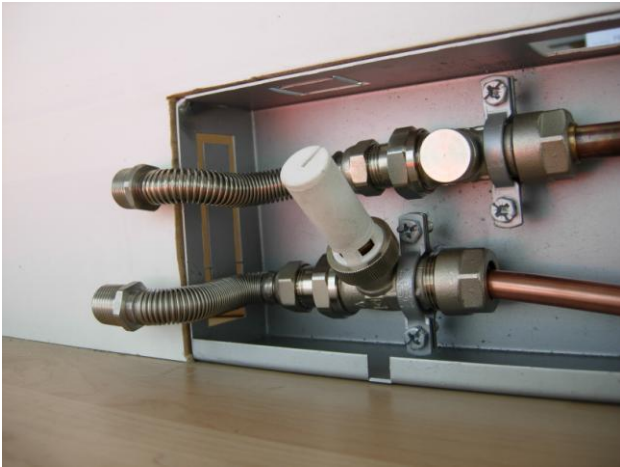
Unpack the equipment and check that the arrow on the valve point in the same water direction. If it is opposite to the expected one, unscrew the valve and holder from the collars and turn them.

Use pliers to remove the pre cut panel portion close by the corrugated conduit and piping arrangement.



Encase completely the metal panel box on the wall, making sure that it does not stick out from the plaster, this could cause problems during installation (space). Protect the valve during plastering. Connect the piping arrangement.

Unscrew the nozzle from the valve and connect it to the hose, use a flat gasket. Shaping the flexible hose, so that bait parallel to the wall.



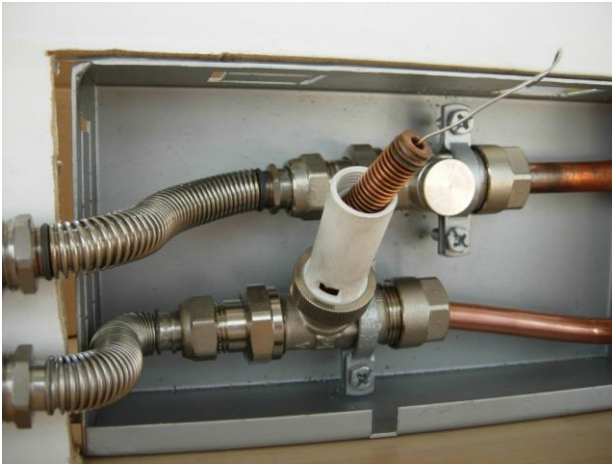
Repeat the operation for the holder.
Bring the attacks at the same height

Set the flexible hoses to the wall (as close as possible) so that it does not protrude more than they should. If they would that may cause problems in fixing the mask.

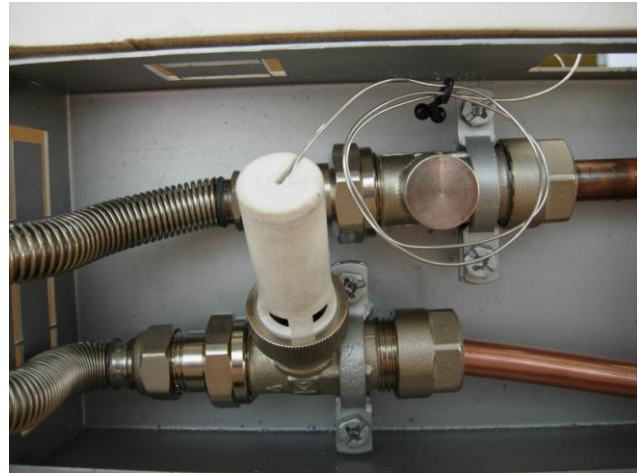


connect with the fitting 15-1/2F, directly
between the flexible hose and the heating
core.
Use of Teflon in the thread.

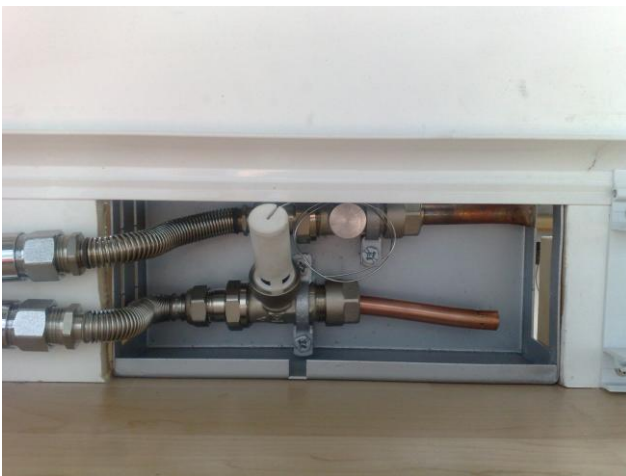
Probe thermostat: unscrew the top of the
plastic part.
Insert the probe in the corrugated conduit
up to the set up box



Insert the probe in place.



Screw the plastic cover, making sure that the capillary probe in excess does not pinch.



Complete the installation following the general instructions. The upper profile will partially hide the setup box.



Complete the installation fixing the mask. This will totally hide the attachment point of the circuit.

If you need assistance during installation, please contact
(Customer Service Hekos)

Tel . +39 0437 999647 - Fax +39 0437 999849